



Pheasant Hollow Business Park

Building #10: 9876 South 500 West, Sandy, Utah 84070



Roderick Realty

S E R V I C E S

www.roderickrealty.com

801-506-5005

- Class A Flex Space: office, retail, showroom, warehouse
- Ground Level & Dock-High Doors
- 28' to 32' Clear Height
- Mezzanine Office Available
- Easy I-15 and South Towne Mall Access



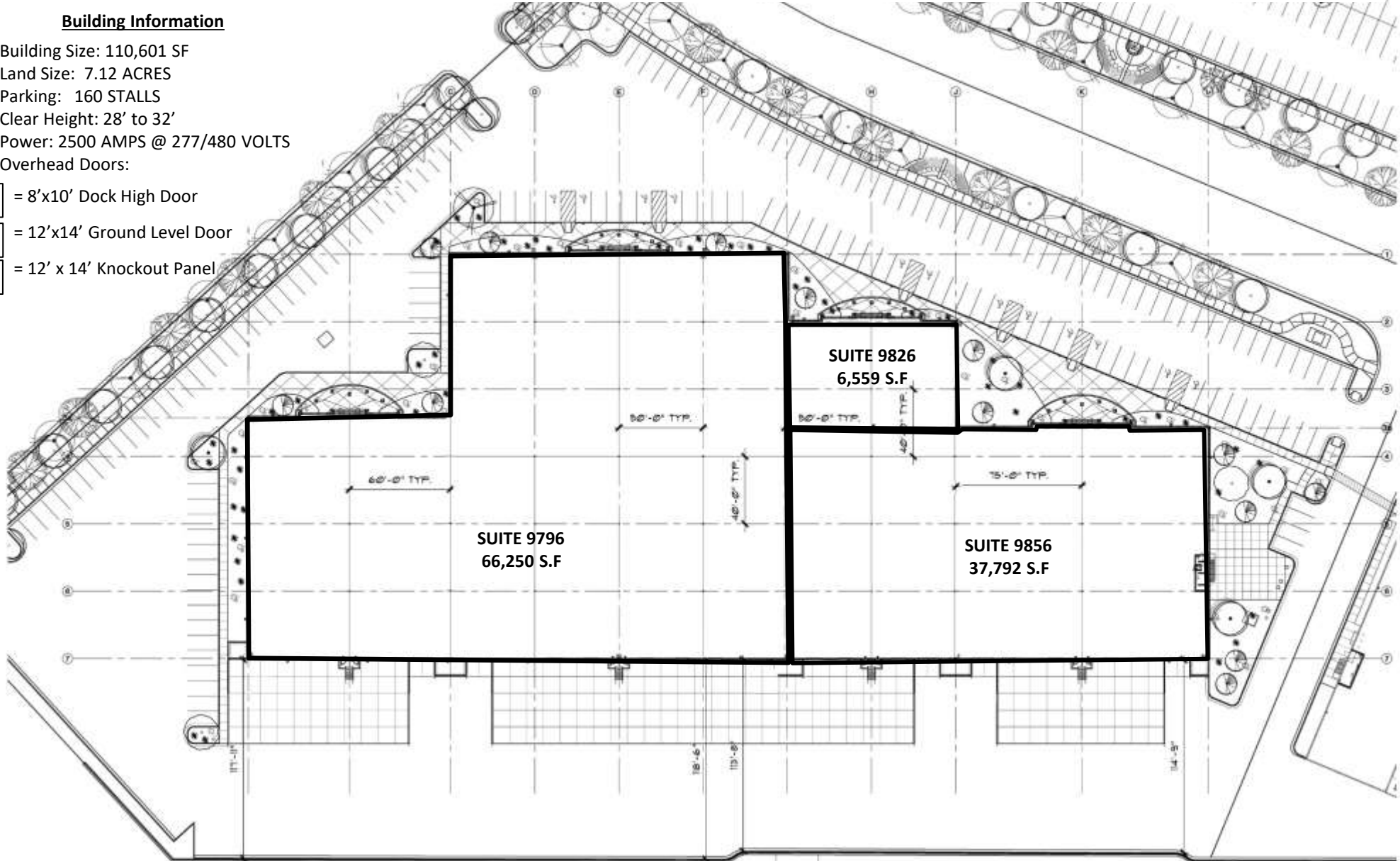
Pheasant Hollow Business Park

Building #10: 9876 South 500 West, Sandy, Utah 84070

Building Information

- Building Size: 110,601 SF
- Land Size: 7.12 ACRES
- Parking: 160 STALLS
- Clear Height: 28' to 32'
- Power: 2500 AMPS @ 277/480 VOLTS
- Overhead Doors:

- 1 = 8'x10' Dock High Door
- 2 = 12'x14' Ground Level Door
- K = 12' x 14' Knockout Panel



Roderick Realty
SERVICES
www.roderickrealty.com
801-506-5005

The information contained herein has been given to us by the owner or obtained from other reliable sources. We have no reason to doubt its accuracy but we do not guarantee it. Vacancy factors, projections, opinions, assumptions or estimates used herein are for example only and represents the current or future performance of the property. The value of this investment depends on tax and other factors which should be evaluated by your tax financial and legal advisors. YOU AND YOUR ADVISOR SHOULD VERIFY PROPERTY INFORMATION TO DETERMINE TO YOUR SATISFACTION THE PROPERTY FOR YOUR NEEDS.



Pheasant Hollow Business Park

Building #10: 9876 South 500 West, Sandy, Utah 84070



Roderick Realty
SERVICES
www.roderickrealty.com
801-506-5005

The information contained herein has been given to us by the owner or obtained from other reliable sources. We have no reason to doubt its accuracy but we do not guarantee it. Vacancy factors, projections, opinions, assumptions or estimates used herein are for example only and represents the current or future performance of the property. The value of this investment depends on tax and other factors which should be evaluated by your tax financial and legal advisors. YOU AND YOUR ADVISOR SHOULD VERIFY PROPERTY INFORMATION TO DETERMINE TO YOUR SATISFACTION THE PROPERTY FOR YOUR NEEDS.



Pheasant Hollow Business Park

Building #10: 9876 South 500 West Sandy, Utah 84070



Roderick Realty
SERVICES
www.roderickrealty.com
801-506-5005

The information contained herein has been given to us by the owner or obtained from other reliable sources. We have no reason to doubt its accuracy but we do not guarantee it. Vacancy factors, projections, opinions, assumptions or estimates used herein are for example only and represents the current or future performance of the property. The value of this investment depends on tax and other factors which should be evaluated by your tax financial and legal advisors. YOU AND YOUR ADVISOR SHOULD VERIFY PROPERTY INFORMATION TO DETERMINE TO YOUR SATISFACTION THE PROPERTY FOR YOUR NEEDS.