

Logan Business Park #2

1137 West 1800 North, Logan, Utah 84323



Roderick Realty

S E R V I C E S
www.roderickrealty.com

801-506-5005

- Class A Warehouse Space
- 2 Ground Level, 8 Dock-High Doors & 2 Knock Out Panels
- 24' Clear Height
- 62' X 62' Bay Size
- 30,740 S.F. (Divisible)
- Convenient access to Logan Downtown and Logan Airport
- Center of Logan Business District



Logan Business Park #2

Building #2: 1137 West 1800 North, Logan, Utah 84323

Building #2 Information

Address: 1137 West 1800 North
Logan, Utah 84323

Building Phase 2 Area: 30,740 S.F.
Lot Area Phase: 2.34 Acres
Loading Area:

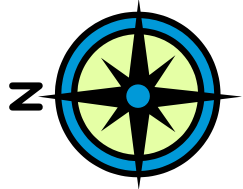
- 1 9' x 10' Dock Level
- 2 12' x 14' Grade Level
- K Knock-Out Panels

Power: 1,000 Amps 480/3ph
Concrete Apron: 60'
Vehicle Parking: 48
Ceiling Height: 24'
Fire Sprinkler: ESFR
Bay Size: 62' x 62'



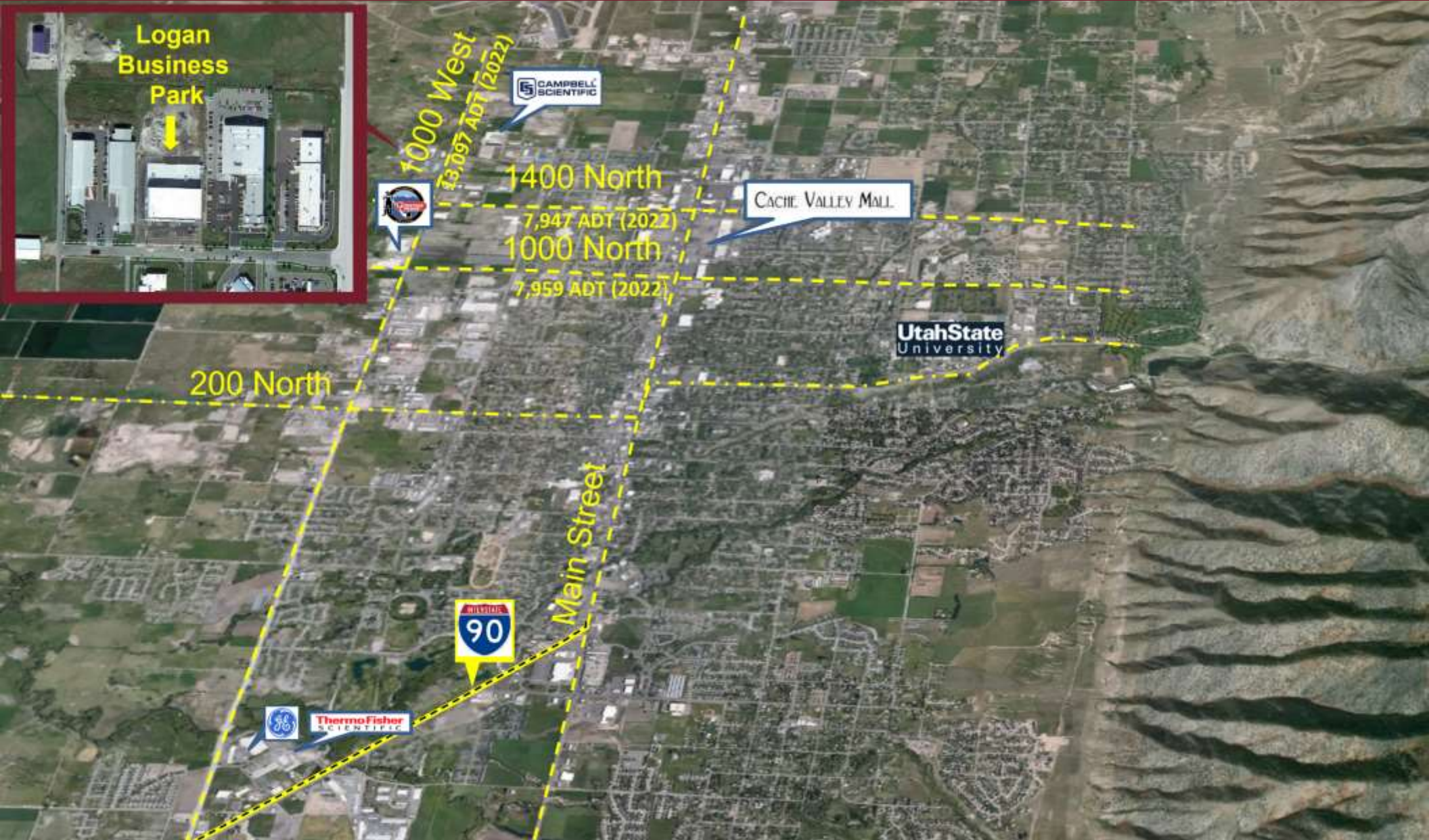
Logan Business Park #2

Building #2: 1137 West 1800 North, Logan, Utah 84323



Logan Business Park #2

Building #2: 1137 West 1800 North, Logan, Utah 84323



Roderick Realty
SERVICES
www.roderickrealty.com
801-506-5005

The information contained herein has been given to us by the owner or obtained from other reliable sources. We have no reason to doubt its accuracy but we do not guarantee it. Vacancy factors, projections, opinions, assumptions or estimates used herein are for example only and represents the current or future performance of the property. The value of this investment depends on tax and other factors which should be evaluated by your tax financial and legal advisors. YOU AND YOUR ADVISOR SHOULD VERIFY PROPERTY INFORMATION TO DETERMINE TO YOUR SATISFACTION THE PROPERTY FOR YOUR NEEDS.