

# *Logan Business Park #1*

1137 West 1700 North, Logan, Utah 84323



**Roderick Realty**

S E R V I C E S  
[www.roderickrealty.com](http://www.roderickrealty.com)

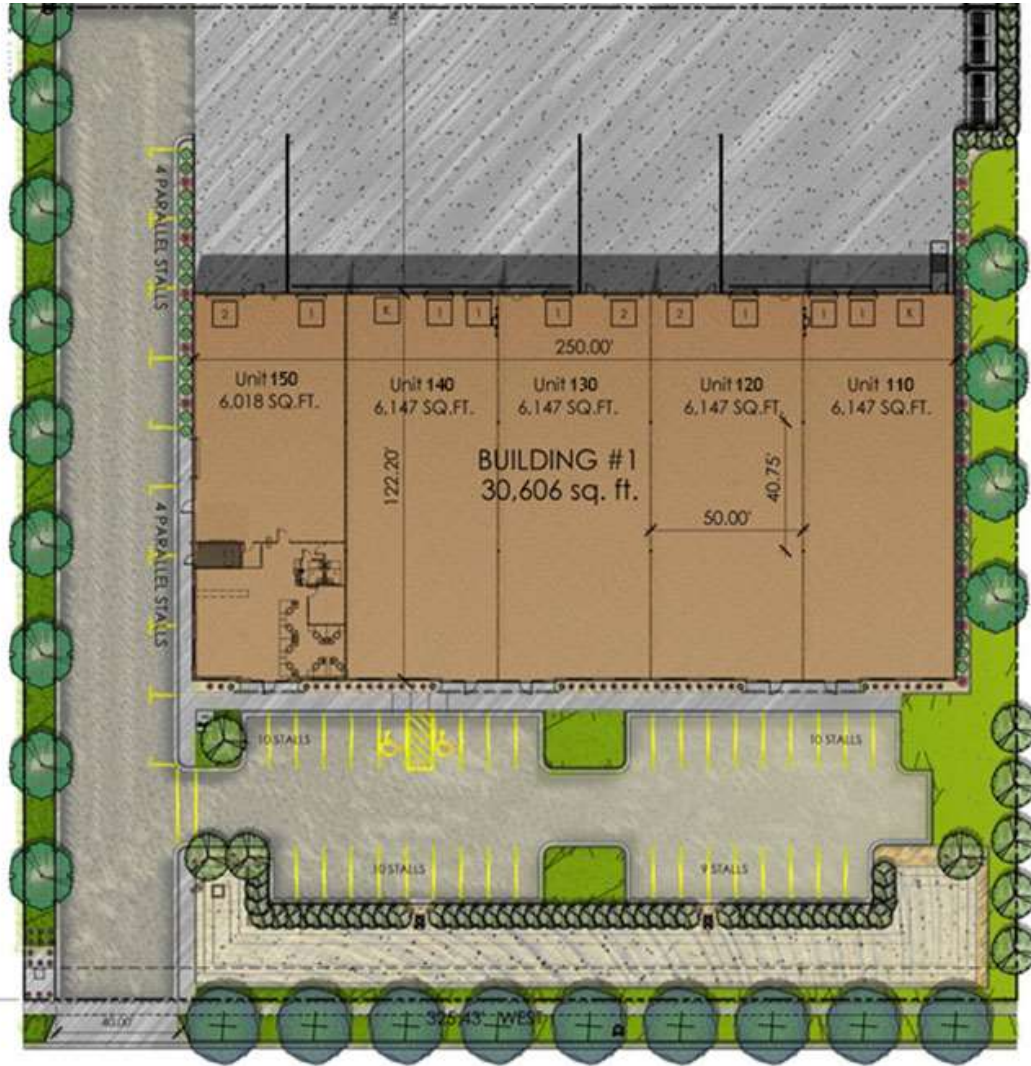
801-506-5005

- Class A Warehouse Space
- 3 Ground Level, 7 Dock-High Doors & 2 Knock Out Panels
- 24' Clear Height
- 50' X 40' Bay Size
- 30,606 S.F. (Divisible)
- Convenient access to Logan Downtown and Logan Airport
- Center of Logan Business District



# Logan Business Park #1

Building #1: 1137 West 1700 North, Logan, Utah 84323



1700 North

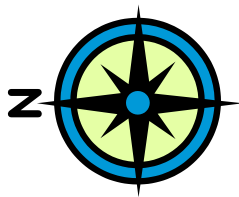
## Building #1 Info

Address:	1137 West 1700 North
Building Phase I area:	30,606 sq. ft.
Lot Area Phase 1:	101,925 sq. ft. / 2.34 acres
Loading Area:	
1 9'x10' Dock Level:	7 doors
2 12'x14' Grade Level:	3 doors
3 Knock-Out Panel:	2 panels
Power:	1000 amps 480v/3ph
Concrete Apron:	60'
Vehicle Parking:	47 stalls
Ceiling Height:	24'-0" Clear
Fire Sprinklers:	NFPA 13
Bay Size:	50' x 40.75'



# Logan Business Park #1

Building #1: 1137 West 1700 North, Logan, Utah 84323

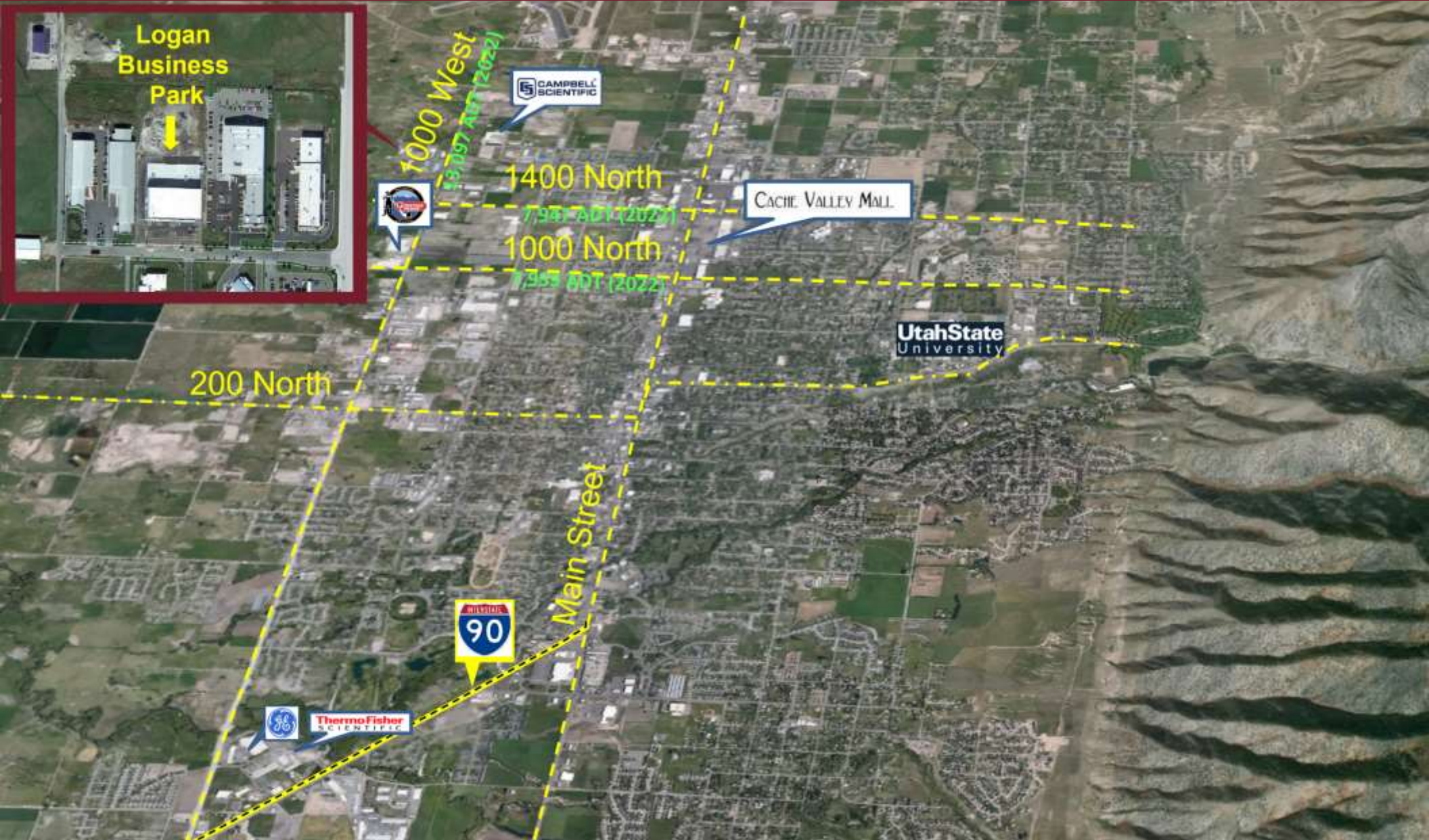


Roderick Realty  
SERVICES  
www.roderickrealty.com  
801-506-5005

The information contained herein has been given to us by the owner or obtained from other reliable sources. We have no reason to doubt its accuracy but we do not guarantee it. Vacancy factors, projections, opinions, assumptions or estimates used herein are for example only and represents the current or future performance of the property. The value of this investment depends on tax and other factors which should be evaluated by your tax financial and legal advisors. YOU AND YOUR ADVISOR SHOULD VERIFY PROPERTY INFORMATION TO DETERMINE TO YOUR SATISFACTION THE PROPERTY FOR YOUR NEEDS.

# Logan Business Park #1

1137 West 1700 North, Logan, Utah 84323



Roderick Realty  
SERVICES  
www.roderickrealty.com  
801-506-5005

The information contained herein has been given to us by the owner or obtained from other reliable sources. We have no reason to doubt its accuracy but we do not guarantee it. Vacancy factors, projections, opinions, assumptions or estimates used herein are for example only and represents the current or future performance of the property. The value of this investment depends on tax and other factors which should be evaluated by your tax financial and legal advisors. YOU AND YOUR ADVISOR SHOULD VERIFY PROPERTY INFORMATION TO DETERMINE TO YOUR SATISFACTION THE PROPERTY FOR YOUR NEEDS.